

**DOCUMENT 00 90 00**  
**ADDENDUM**

**ADDENDUM No.:** 1

**DATE:** March 14, 2024

**RE:** WESTERN TECHNICAL COLLEGE  
COLEMAN CENTER 2024 RENOVATION  
368 6TH ST NORTH  
LA CROSSE, WISCONSIN 54601  
PROJECT NO. 23072

**FROM:** HSR Associates, Inc  
100 Milwaukee Street  
La Crosse, WI 54603  
(608) 784-1830

**TO:** Prospective Bidders

---

This addendum forms a part of the Contract Documents and modifies the original Bidding Documents dated March 2024. Acknowledge receipt of this Addendum in the space provided on the bid form. Failure to do so may subject the Bidder to disqualification.

This Addendum consists of: 1 page, 0 documents, 1 section, and 4 drawings.

---

**CHANGES TO SPECIFICATIONS:**

1. Section 12 24 00 Window Shades
  - a. See the new section included in this addendum.

**CHANGES TO DRAWINGS**

2. Sheet A090 REMOVAL PLANS 30"x42"
  - a. See the revised sheet included in this addendum. Disregard the previous version.
  - b. KEY NOTES REMOVAL: See clouded changes for keynote 7 added.
  - c. 1/A090: See clouded changes for keynote 7 added.
3. Sheet A102 ENLARGED PLAN, RCP 30"x42"
  - a. See the revised sheet included in this addendum. Disregard the previous version.
  - b. KEY NOTES RCP: See clouded changes for keynote 3 added.
  - c. 1/A102: See clouded changes for keynote 3 added.
4. Sheet ID101 FINISH FLOOR PLAN 30"x42"
  - a. See the revised sheet included in this addendum. Disregard the previous version.
  - b. MASTER COLOR SCHEDULE: See clouded changes for WS-1 added.
5. Sheet E101 CLASSROOMS ELECTRICAL PLANS 30"x42"
  - a. See the revised sheet included in this addendum. Disregard the previous version.
  - b. 4/E101: See clouded change for (1) added data jack for wall-mounted information monitor. See clouded change for (1) added duplex receptacle for wall-mounted monitor.
  - c. Added Electrical Remodel Plan Notes Item #22.

**END OF DOCUMENT 00 90 00**

Page Intentionally Left Blank

**SECTION 12 24 00  
WINDOW SHADES**

**PART 1 GENERAL**

**1.01 SECTION INCLUDES**

- A. Interior manual roller shades.

**1.02 RELATED REQUIREMENTS**

- A. Applicable provisions of Division 1 govern the work of this section.

**1.03 REFERENCE STANDARDS**

- A. ASTM G21 - Standard Practice for Determining Resistance of Synthetic Polymeric Materials to Fungi; 2015, with Editorial Revision (2021).
- B. NFPA 701 - Standard Methods of Fire Tests for Flame Propagation of Textiles and Films; 2023, with Errata.

**1.04 SUBMITTALS**

- A. See Section 01 30 00 - Administrative Requirements for procedures.
- B. Provide submittal transmittals that include all submittal items identified in each submittal group below.
- C. Review Submittals - Preparatory:
  - 1. Product Data: Provide manufacturer's standard catalog pages and data sheets, including materials, finishes, fabrication details, dimensions, profiles, mounting requirements, and accessories.
  - 2. Shop Drawings: Include shade schedule indicating size, location and keys to details, head, jamb and sill details, mounting dimension requirements for each product and condition, and operation direction.
- D. Review Submittals - Samples:
  - 1. Verification Samples: Minimum size 6 inches square, representing actual materials, color and pattern.
- E. Closeout Submittals:
  - 1. Manufacturer's Instructions: Include instructions for storage, handling, protection, examination, preparation, and installation of product.
  - 2. Project Record Documents: Record actual locations of control systems and show interconnecting wiring.
  - 3. Warranty: Submit sample of manufacturer's warranty and documentation of final executed warranty completed in Owner's name and registered with manufacturer.

**1.05 QUALITY ASSURANCE**

- A. Manufacturer Qualifications: Company specializing in manufacturing products specified in this section, with not less than five years of documented experience.
- B. Installer Qualifications: Company specializing in performing work of this type with minimum 3 years of documented experience with shading systems of similar size and type.

**1.06 DELIVERY, STORAGE, AND HANDLING**

- A. Deliver shades in manufacturer's unopened packaging, labeled to identify each shade for each opening.
- B. Handle and store shades in accordance with manufacturer's recommendations.

**1.07 WARRANTY**

- A. See Section 01 78 00 - Closeout Submittals, for additional warranty requirements.
- B. Provide manufacturer's warranty from Date of Substantial Completion, covering the following:
  - 1. Shade Hardware: One year.
  - 2. Fabric: One year.
- C. Correct defective Work within a two year period after Date of Substantial Completion.

## **PART 2 PRODUCTS**

### **2.01 MANUFACTURERS**

- A. Interior Manually Operated Roller Shades:
  - 1. See Master Color Schedule for basis of design product and configuration.
  - 2. Substitutions: See Section 01 25 00 - Substitution Procedures for requirements.

### **2.02 ROLLER SHADES**

- A. General:
  - 1. Provide shade system components that are easy to remove or adjust without removal of mounted shade brackets.
  - 2. Provide shade system that operates smoothly when shades are raised or lowered.
  - 3. Flammability: Pass NFPA 701 large and small tests.
  - 4. Fungal Resistance: No growth, tested to ASTM G21.

### **2.03 LIGHT FILTERING SHADE FABRIC**

- A. Fabric for Light-Filtering Shades: Non-flammable, color-fast, impervious to heat and moisture, and able to retain its shape under normal operation.
- B. Refer to Master Color Schedule on ID Drawings for basis of design.

### **2.04 ROLLER SHADE FABRICATION**

- A. Field measure finished openings prior to ordering or fabrication.
- B. Dimensional Tolerances: Fabricate shades to fit openings within specified tolerances.
  - 1. Vertical Dimensions: Fill openings from head to sill with 1/2 inch space between bottom bar and window stool.
  - 2. Horizontal Dimensions - Inside Mounting: Provide symmetrical light gaps on both sides of shade not to exceed 3/4 inch total.

## **PART 3 EXECUTION**

### **3.01 EXAMINATION**

- A. Examine finished openings for deficiencies that may preclude satisfactory installation.
- B. If substrate preparation is the responsibility of another installer, notify Architect of unsatisfactory preparation before proceeding.
- C. Start of installation shall be considered acceptance of substrates.

### **3.02 PREPARATION**

- A. Prepare surfaces using methods recommended by manufacturer for achieving best result for substrate under the project conditions.
- B. Coordinate with window installation and placement of concealed blocking to support shades.

### **3.03 INSTALLATION**

- A. Install in accordance with manufacturer's instructions and approved shop drawings, using mounting devices as indicated.
- B. Installation Tolerances:
  - 1. Inside Mounting: Maximum space between shade and jamb when closed of 1/16 inch.
  - 2. Maximum Offset From Level: 1/16 inch.
- C. Replace shades that exceed specified dimensional tolerances at no extra cost to Owner.
- D. Adjust level, projection, and shade centering from mounting bracket. Verify there is no telescoping of shade fabric. Ensure smooth shade operation.

### **3.04 CLEANING**

- A. Clean soiled shades and exposed components as recommended by manufacturer.
- B. Replace shades that cannot be cleaned to "like new" condition.



Consultant:

**REMOVAL GENERAL NOTES:**

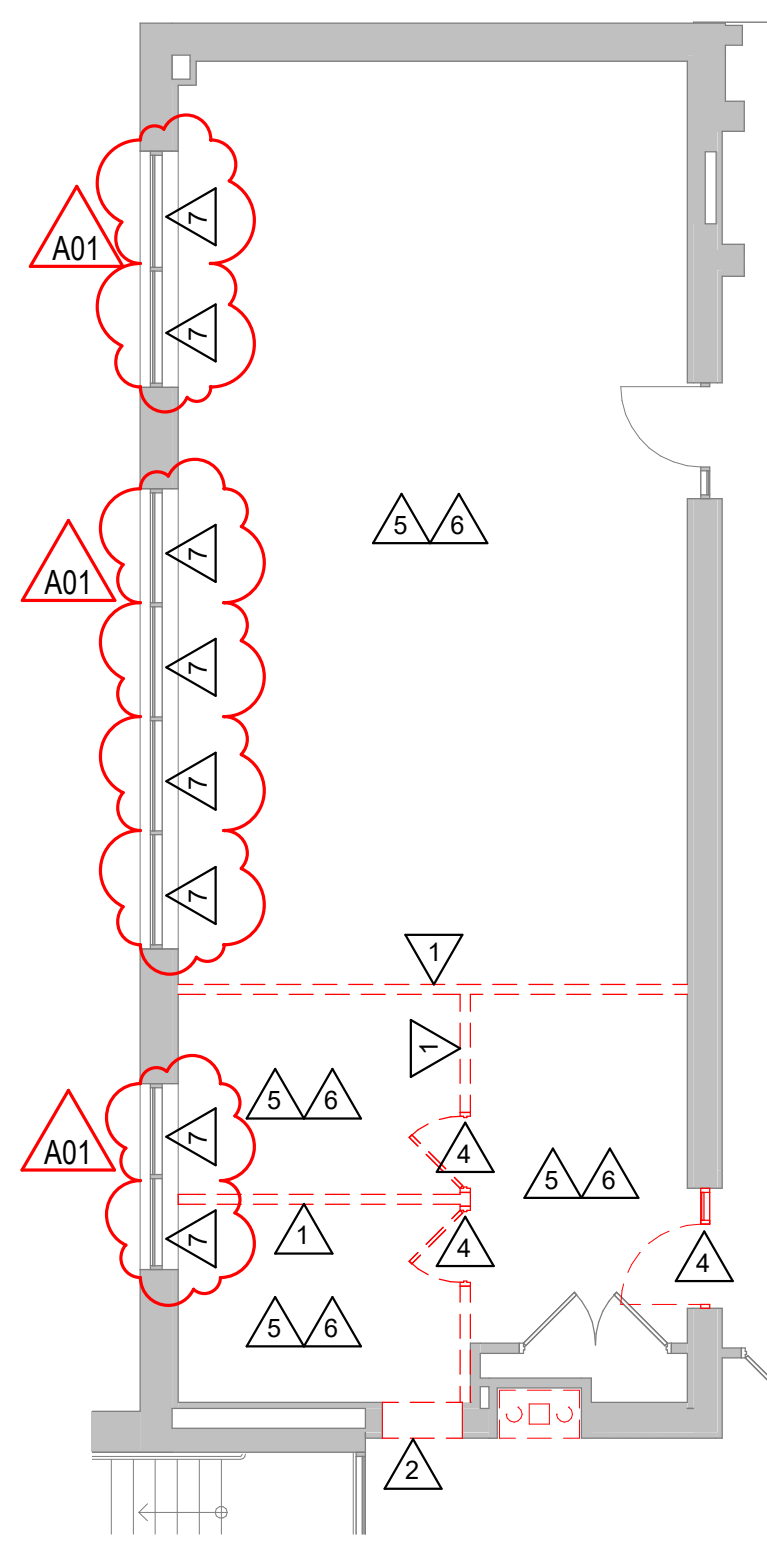
- A. ALL ITEMS SHOWN DASHED ON DEMOLITION PLANS SHALL BE REMOVED FROM THE SITE UNLESS OTHERWISE NOTED. REFERENCE MEP DRAWINGS FOR APPLICABLE EQUIPMENT REMOVALS AND MODIFICATIONS. COORDINATE PATCHING AT EQUIPMENT REMOVALS.
- B. AT WALL TYPES/MATERIALS, PREPARATION FOR NEW FINISHES SHALL INCLUDE, BUT NOT BE LIMITED TO REMOVAL OF EXISTING FINISHES, TAPES, GLUES/MASTIC, NAILS AND RELATED ITEMS. PATCHING OF HOLES, INDENTATIONS AND CRACKS FOR AN ACCEPTABLE SURFACE FOR NEW FINISH INSTALLATION.
- C. OWNER WILL REMOVE LOOSE FURNISHINGS AND EQUIPMENT FROM THE WORK AREA PRIOR TO START OF CONSTRUCTION.
- D. MAINTAIN ALL EXIT DOORS AND CORRIDORS IN UNOBSTRUCTED OPERABLE CONDITION WITH SAFE PASSAGE AWAY FROM THE BUILDING.
- E. ROOM NUMBERS ARE SHOWN ON THIS PLAN FOR INFORMATIONAL AND COORDINATION PURPOSES ONLY.
- F. COORDINATE STORAGE LOCATIONS FOR SALVAGED ITEMS WITH OWNER.
- G. PROVIDE FLOOR PROTECTION AS SPECIFIED AT DEBRIS REMOVAL PATHS THROUGH BUILDING.

**REMOVAL PLAN LEGEND:**

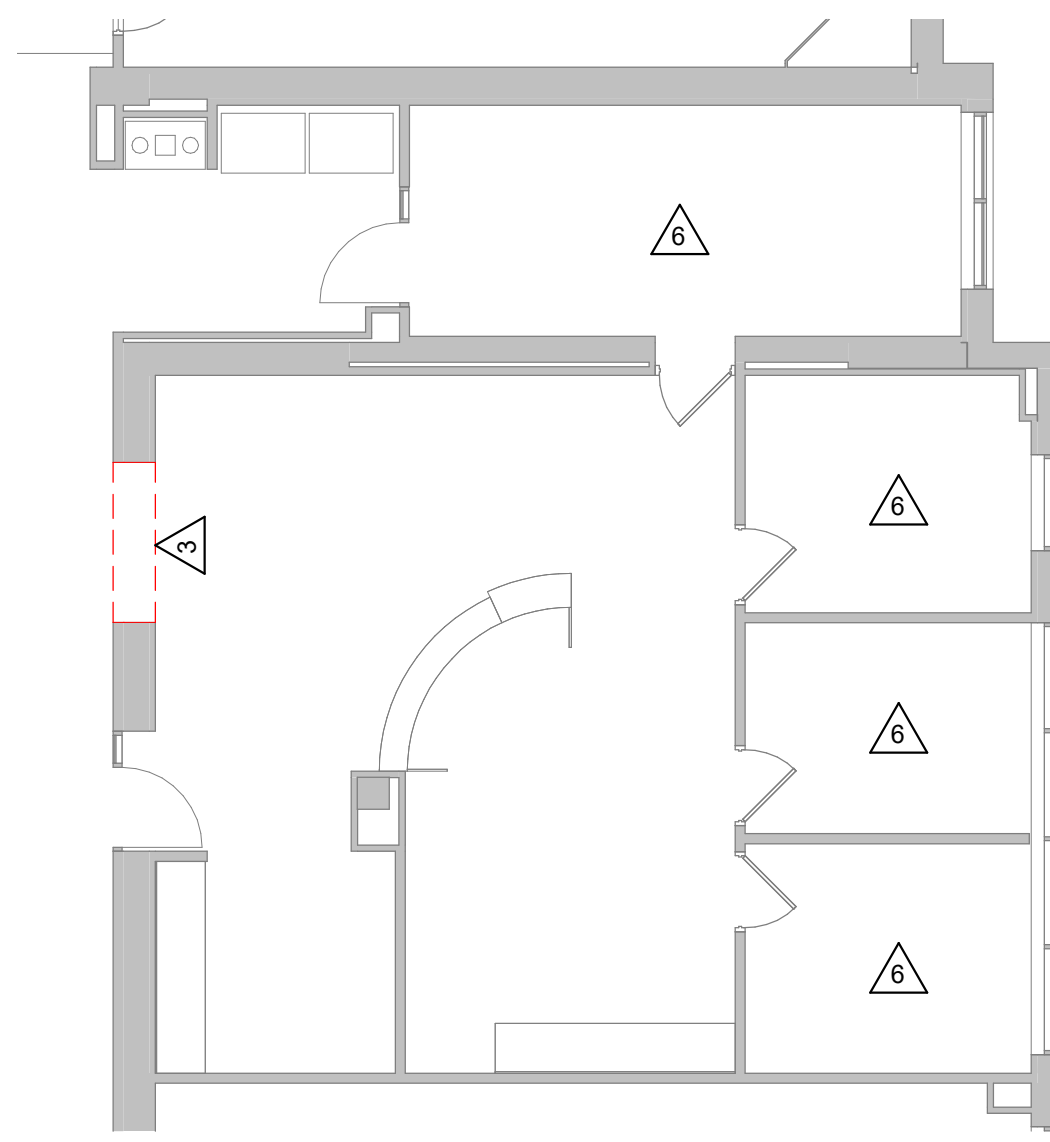
- SYMBOL INDICATES CONSTRUCTION NOTE THIS SHEET
- REMOVE ITEMS NOTED WITH DASHED LINES
- SYMBOL INDICATES REMOVAL OF DOOR AND FRAME UNLESS NOTED OTHERWISE

**KEY NOTES REMOVAL**

- 1 REMOVE EXISTING STUD PARTITION AND GYP BOARD WALL FINISH
- 2 CREATE OPENING IN EXISTING MASONRY WALL FOR NEW DOOR/WINDOW. REMOVE MASONRY WALL TO FLOOR DECK ABOVE.
- 3 CREATE OPENING IN EXISTING MASONRY WALL FOR NEW DOOR/WINDOW OVERSIZED DEMOLISHED OPENING AS REQUIRED FOR INSTALLATION OF JAMB REINFORCING AND LINTEL.
- 4 REMOVE EXISTING DOOR AND FRAME, INCLUDING SIDELIGHT AND TRANSOM WINDOW WHERE APPLICABLE.
- 5 REMOVE EXISTING SUSPENDED ACOUSTIC TILE CEILING SYSTEM.
- 6 REMOVE EXISTING CARPET FLOORING AND VINYL BASE.
- 7 REMOVE EXISTING WINDOW SHADES.



**1** DEMO PLAN RM 111  
1/8" = 1'-0"



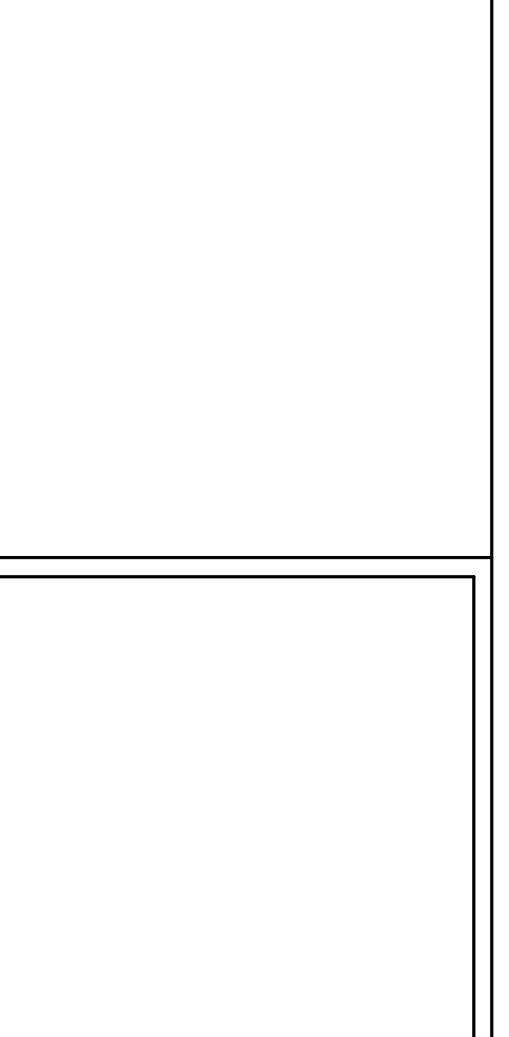
**2** DEMO PLAN RM 130  
1/8" = 1'-0"

WESTERN TECHNICAL COLLEGE  
 COLEMAN CENTER 2024 RENOVATION  
 Project Location: 368 6TH ST NORTH  
 LA CROSSE, WI  
 REMOVAL PLANS

Project Title:  
Project Location:  
Sheet Title:

HSR Project Number:  
**23072**  
Project Date:  
**MARCH 2024**  
Drawn By:  
**HSR**

Key Plan:

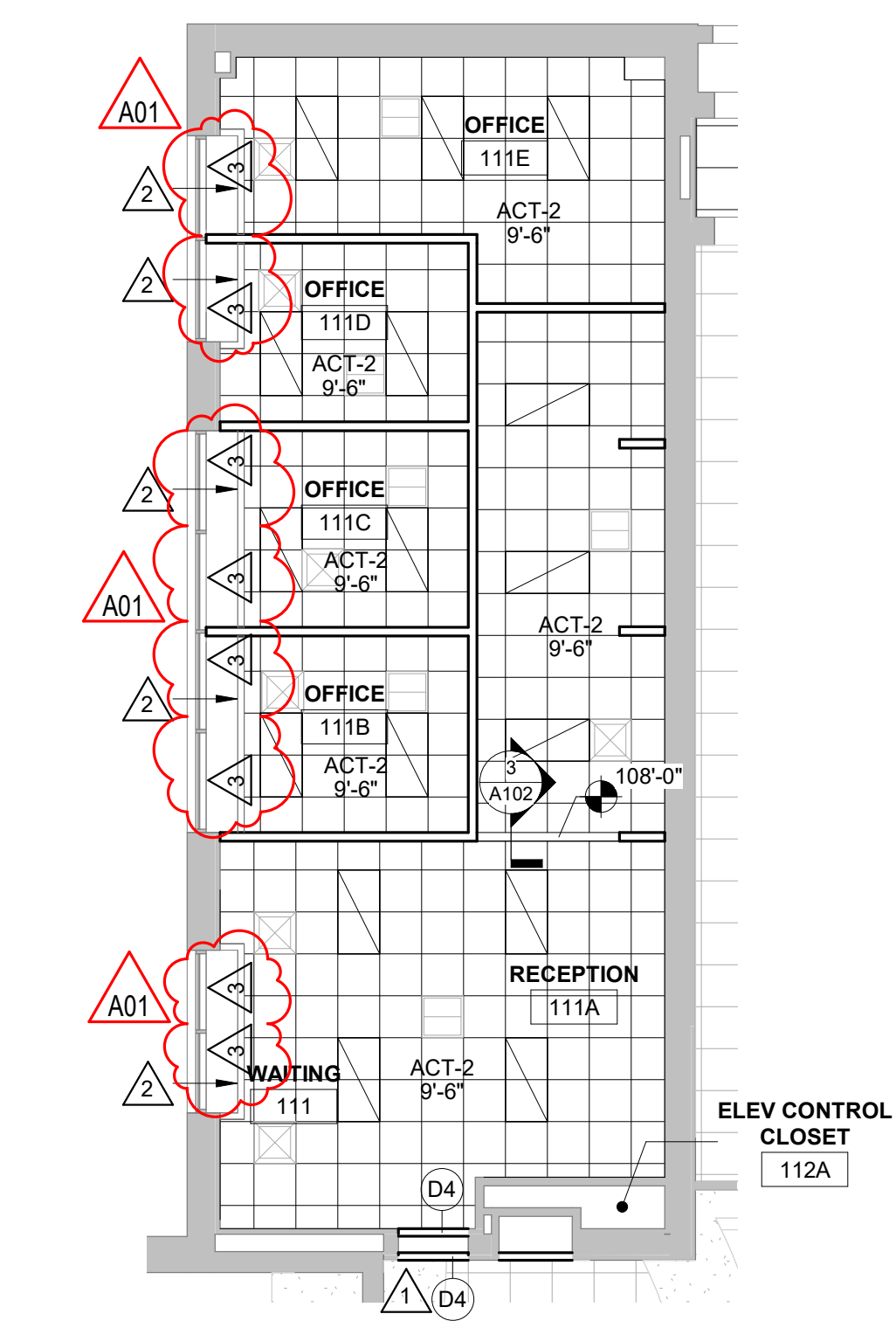


No.	Description	Date
A01	Addendum 1	3/14/2024

Graphic Scale:  
0' 2' 4' 8' 12'

Last Update:  
**3/14/2024 9:56:26 AM**

**A090**



**1** RCP RM 111  
1/8" = 1'-0"

**RCP GENERAL NOTES:**

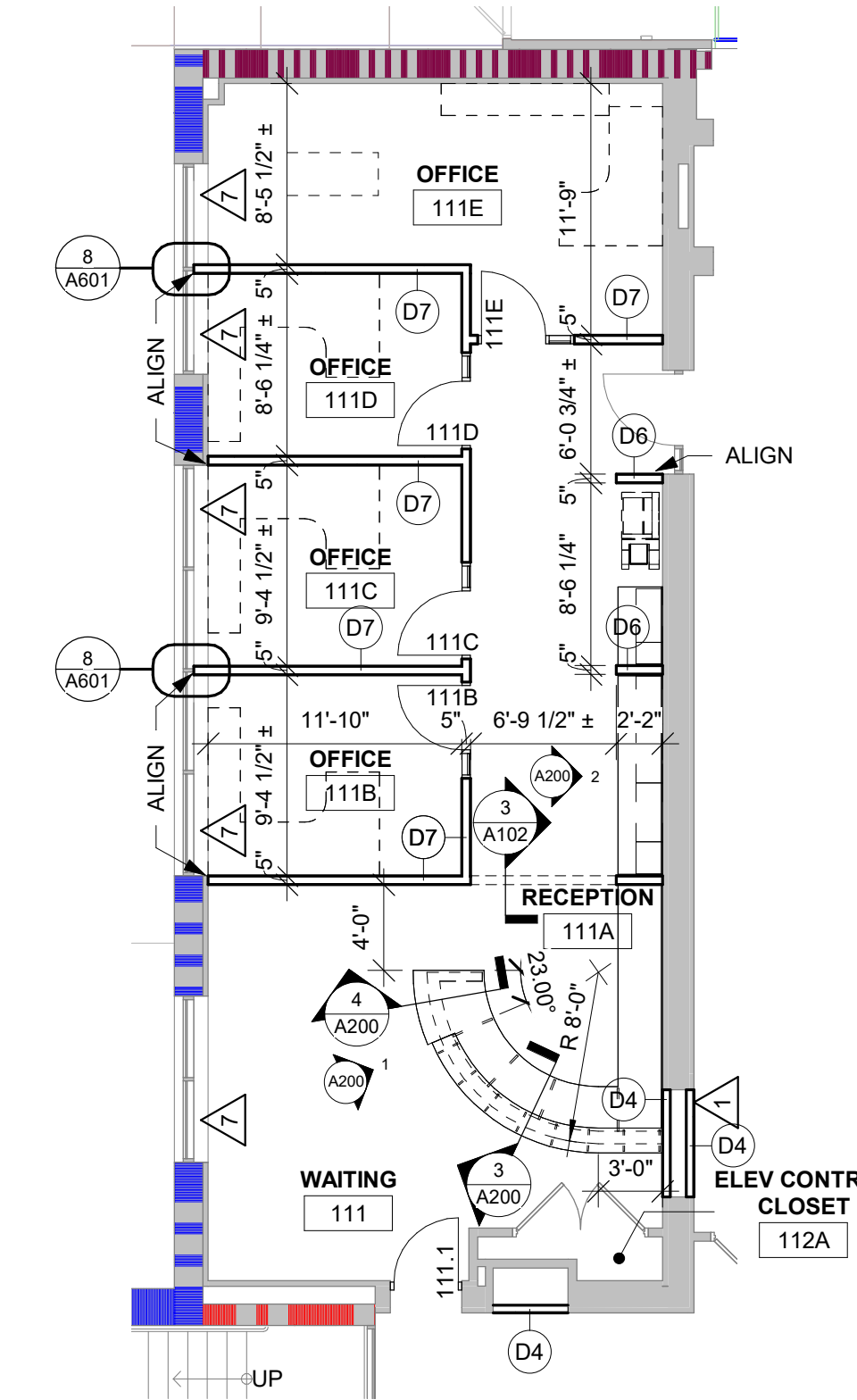
- A. SEE MECHANICAL FOR CEILING GRILLE INFORMATION.
- B. SEE ELECTRICAL FOR LIGHTING TYPES.
- C. ALL INTERIOR PARTITIONS TO EXTEND TO BOTTOM OF DECK UNLESS OTHERWISE NOTED. CLOSE DECK FLUTES AT TOP OF WALL WITH NEOPRENE FILLER OR FIRESTOPPING SYSTEM. IN GYP/STUD PARTITIONS SEE SPECIFICATION FOR LEVEL OF FINISH ABOVE FINISHED CEILING.
- D. ALL REMAINING ANNULAR SPACE AROUND ITEMS PENETRATING WALLS SHALL BE NEATLY SEALED. PENETRATIONS OF FIRE RATED WALLS SHALL BE FIRESTOPPED WITH THE SAME AS THE WALL.
- E. REFER TO INTERIOR DESIGN SHEETS FOR OTHER FINISHES.
- F. HANGERS AND SUPPORTS: MECHANICAL, PLUMBING, ELECTRICAL AND OTHER CEILING CONTRACTORS SHALL NOT HANG OR SUPPORT THE WORK FROM THE ROOF DECK IN ANY FASHION. CONDUIT RUNS SHALL NOT BE LAID ON ROOF DECK NOR LAID ON THE STRUCTURAL SUPPORT THAT SUPPORTS THE ROOF DECK. NO FASTENERS SHALL PENETRATE ROOF DECK BY ANY TRADE OTHER THAN THE ROOFING CONTRACTOR FOR THE NEW ROOF SYSTEM.
- G. CEILING TYPES INSTALLED AS NOTED ON PLANS. SEE SPECIFICATIONS FOR ADDITIONAL SYSTEM INFORMATION. ACT-2-REGULAR EDGE

**RCP LEGEND:**

- LIGHT FIXTURE - SEE ELECTRICAL
- SUPPLY - SEE MECHANICAL
- RETURN - SEE MECHANICAL

**KEY NOTES RCP**

- 1 REMOVE/REINSTALL GYP CEILING AS REQUIRED FOR INSTALLATION OF NEW OPENING. HEADER AND REMOVAL OF EXISTING MASONRY WALL
- 2 REMOVE AND REINSTATE GYP WINDOW WEALS AS REQUIRED FOR INSTALLATION OF NEW WALLS AND AC TILE CEILING
- 3 WINDOW SHADE WS-1



**2** FOUNDATION OFFICE RM 111  
1/8" = 1'-0"

**PLAN GENERAL NOTES:**

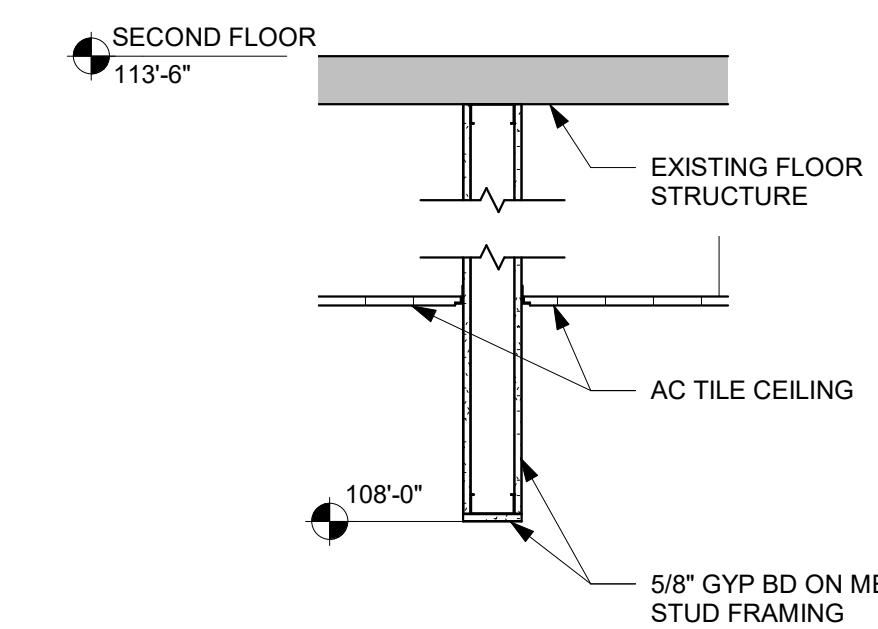
- A. REFER TO OVERALL PLANS FOR FIRE RATING LOCATIONS AND ACCESSIBILITY ROUTES.
- B. SEE ID SHEETS FOR FLOOR AND WALL FINISH LAYOUTS.
- C. LOOSE FURNISHINGS EXCEPT AS NOTED SHALL BE PROVIDED AND INSTALLED BY THE OWNER.
- D. FIXED EQUIPMENT IS SHOWN ON THIS PLAN FOR COORDINATION.
- E. PAINT ALL EXPOSED STEEL LINTELS.
- F. EXTEND ALL WALLS TO DECK UNLESS NOTED OTHERWISE.
- G. GENERAL CONTRACTOR TO PROVIDE CONCRETE EQUIPMENT PADS/CURBS AS REQUIRED FOR MECHANICAL / ELECTRICAL EQUIPMENT - VERIFY SIZE, PROFILE & LOCATION WITH MECHANICAL / ELECTRICAL.
- H. VERIFY EXACT SIZE AND LOCATION OF ALL MECHANICAL / PLUMB AND ELEC OPENINGS - GENERAL CONTRACTOR SHALL BE RESPONSIBLE FOR FINISH AT ALL VISIBLE AREAS. ALL OPENING SHALL BE SEALED AFTER UTILITY INSTALLATION.

**PLAN LEGEND:**

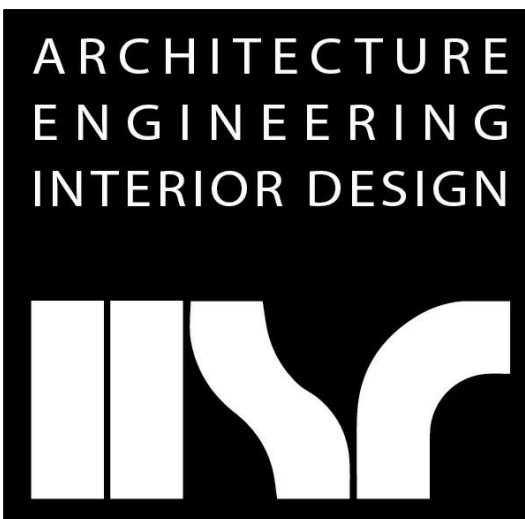
- SYMBOL INDICATES WALL TYPE - SEE SHEET A600 FOR WALL TYPE DETAILS.
- SYMBOL INDICATES WINDOW TYPE. SEE SHEET A600 FOR WINDOW FRAME ELEVATIONS.
- SYMBOL INDICATES CONSTRUCTION NOTE THIS SHEET
- 1 HOUR WALL
- 2 HOUR WALL
- 3 HOUR WALL

**KEY NOTES PLAN**

- 1 INFILL OPENING W/ STUD CONSTRUCTION TO MATCH ADJACENT
- 2 W/BS WITH 3/8" TOP PLATE TO MATCH WALL THICKNESS
- 3 12x16 CMU PIER W/ (4) #4 AND #3 TIES AT 8" OC
- 4 ELECTRICAL WORK ONLY IN THIS ROOM - SEE ELECTRICAL
- 5 NEW FURNITURE BY OWNER
- 6 NEW SOLID SURFACE SILL
- 7 EXISTING WINDOW SILL TO REMAIN



**3** BULKHEAD DETAIL  
3/4" = 1'-0"



**HSR ASSOCIATES INC.**  
100 MILWAUKEE STREET  
LA CROSSE, WISCONSIN  
PHONE: 608.784.1830  
FAX: 608.782.5844  
www.hsrassociates.com

Consultant:

Project Title: **WESTERN TECHNICAL COLLEGE COLEMAN CENTER 2024 RENOVATION**  
Project Location: **368 6TH ST NORTH LA CROSSE, WI**  
Sheet Title: **ENLARGED PLAN, RCP**

HSR Project Number: **23072**  
Project Date: **MARCH 2024**  
Drawn By: **HSR**

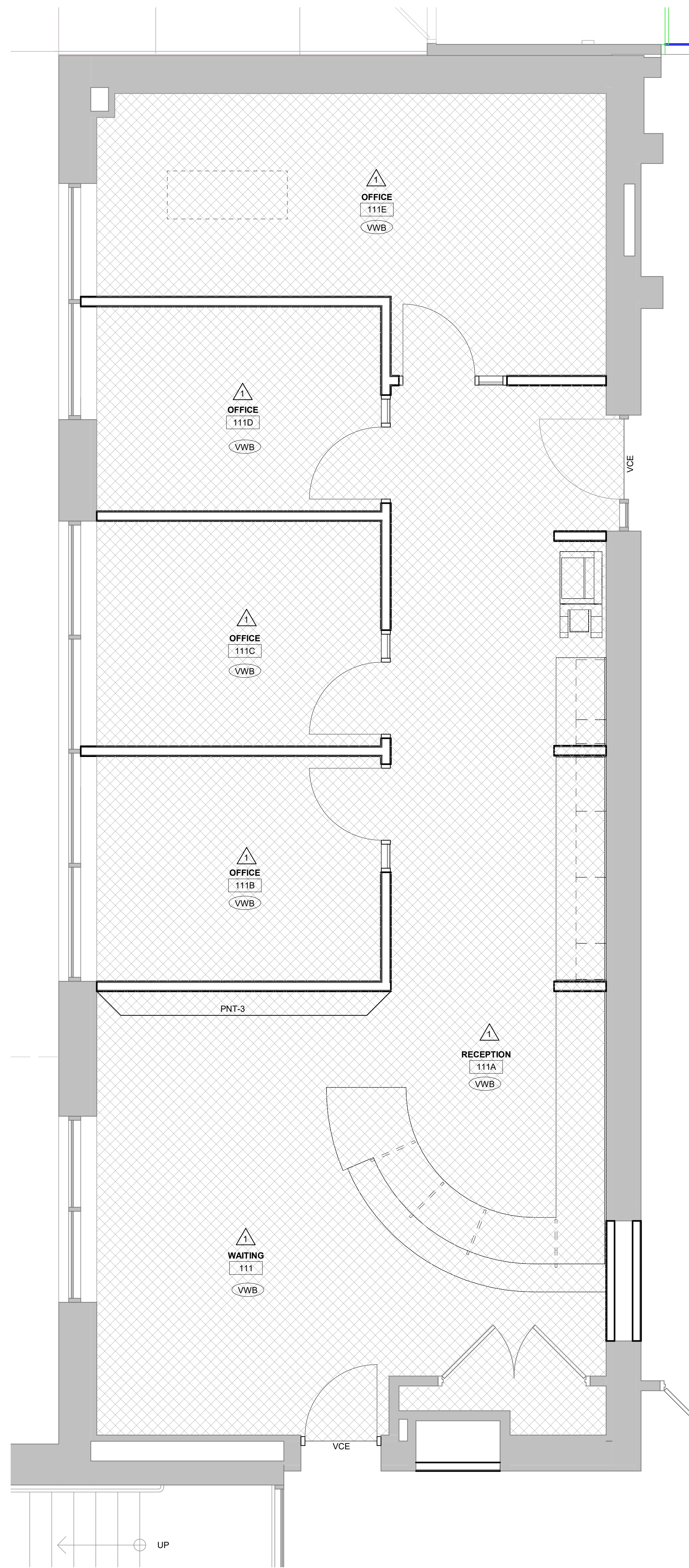
Key Plan:

Revisions:

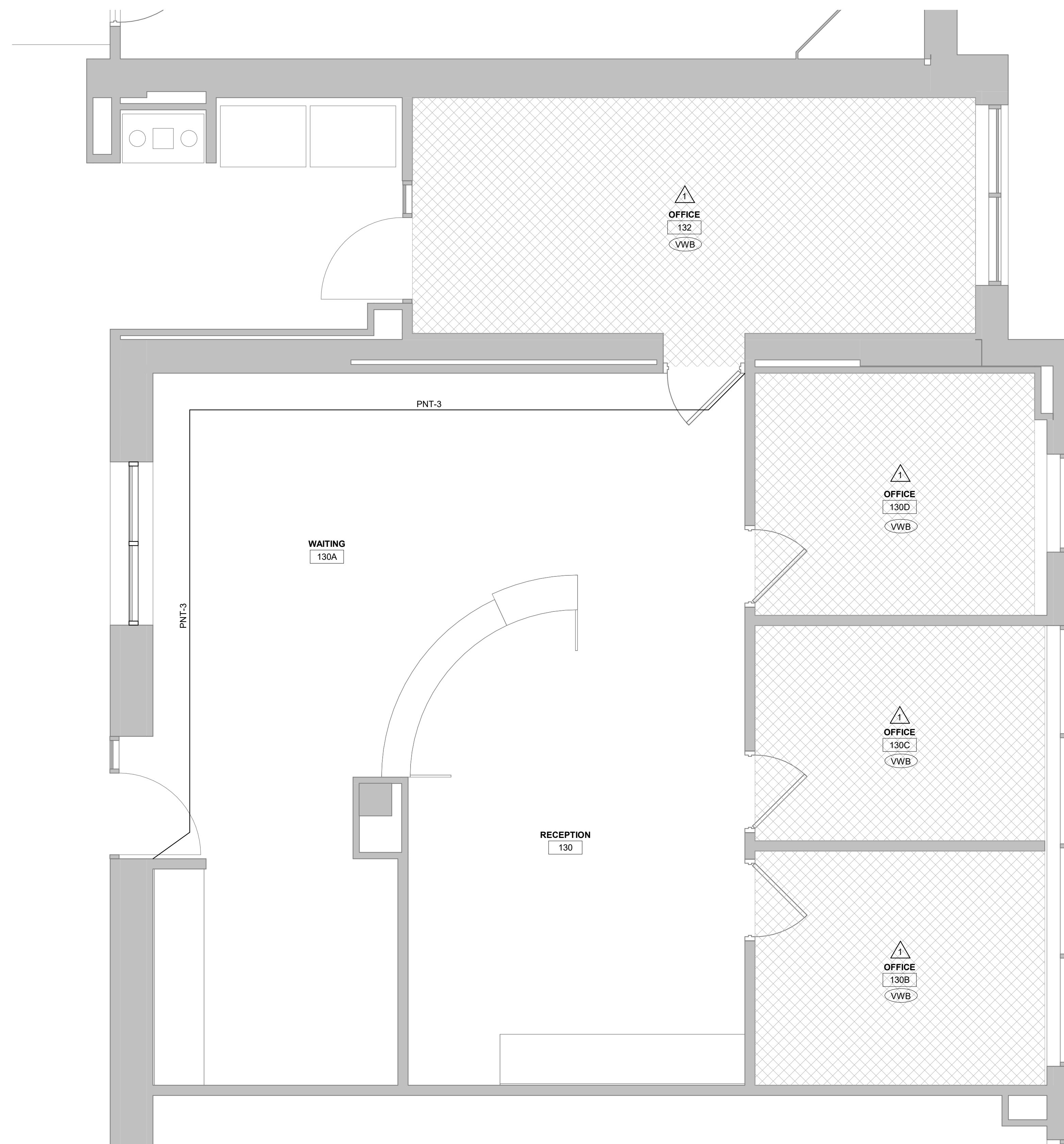
No.	Description	Date
A01	Addendum 1	3/14/2024

Graphic Scale: **VARIES**  
Last Update: **3/14/2024 9:57:04 AM**

**A102**



**2** ID FOUNDATION OFFICE RM 111  
3/8" = 1'-0"



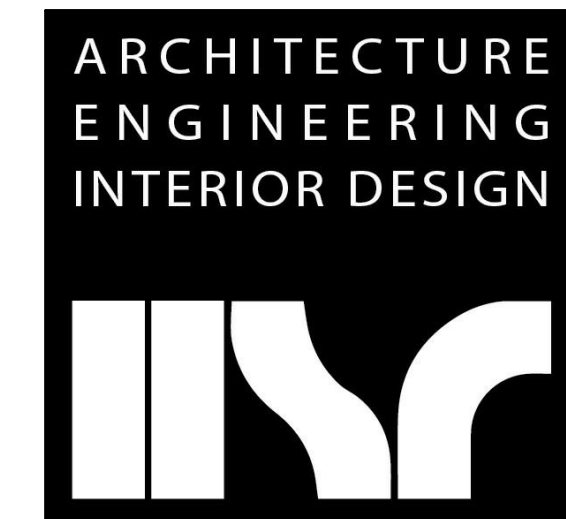
**1** ID BUSINESS OFFICE RM 130  
3/8" = 1'-0"

**INTERIOR GENERAL NOTES:**  
 A. REFERENCES TO PAINT PERTAIN TO COLOR ONLY; PAINT TYPE SHALL BE IDENTIFIED IN THE ARCHITECTURAL SPECIFICATIONS.  
 B. PNT-1 FIELD PAINT; ACCENT PAINT AS INDICATED. SEE ID SHEETS.  
 C. REFER TO MASTER COLOR SCHEDULE FOR MATERIAL FINISH SPECIFICATIONS, ANNOTATIONS, AND ADDITIONAL INFORMATION.  
 D. VINYL COMPOSITE EDGE (VCE) TO BE INSTALLED AT DISSIMILAR FINISH AREAS; REFER TO ID SHEETS. INSTALL APPROPRIATE EDGE PROFILE TO PROTECT FINISH EDGES. COLOR AS SELECTED BY A/E.  
 E. AT DISSIMILAR FLOORING FINISHES, SET JOINT OF MATERIALS AT CENTER OF DOOR. TRANSITIONS TO BE ADA COMPLIANT.

**INTERIOR FINISH KEY PLAN:**  
 [Symbol] SEE ROOM FINISH REMARKS  
 [Symbol] WALL BASE  
 [Symbol] PNT-X ACCENT PAINT

**INTERIOR FINISH LEGEND:**  
 [Symbol] CPT-1

**ROOM FINISH REMARKS**  
 1 PAINT ALL WALLS PNT-1. ACCENT AS INDICATED ON PLANS



**HSR ASSOCIATES INC.**  
 100 MILWAUKEE STREET  
 LA CROSSE, WISCONSIN  
 PHONE: 608.784.1830  
 FAX: 608.782.5844  
 www.hsrassociates.com

Consultant:

Project Title: **WESTERN TECHNICAL COLLEGE COLEMAN CENTER 2024 RENOVATION**  
 Project Location: 368 6TH ST NORTH LA CROSSE, WI  
 Sheet Title: **FINISH FLOOR PLAN**

Project Number: 23072  
 Project Date: MARCH 2024  
 Drawn By: HSR

Key Plan:

No.	Description	Date
A01	Addendum 1	3/14/2024

Revisions:

Graphic Scale: VARIES  
 Last Update: 3/14/2024 10:09:21 AM

**ID101**

MASTER COLOR SCHEDULE											
MANUFACTURER / COLOR		GENERAL LOCATION	REMARKS	MANUFACTURER / COLOR		GENERAL LOCATION	REMARKS	MANUFACTURER / COLOR		GENERAL LOCATION	REMARKS
<b>06 41 00 CUSTOM CABINETS</b>				<b>09 65 00 RESILIENT FLOORING/BASE</b>				<b>09 90 00 PAINTS AND COATINGS</b>			
PLAM-1 (Plastic Laminate)	Manufacturer: Formica Color: Graphit Twill Finish: Matte	Cabinets	Comparable Products by Prior Approval	VWB-1 (Vinyl Wall Base)	Manufacturer: Tarkett Size: 4in base Color: 40 - Black B	Field	Comparable Products by Prior Approval	PNT-1 (Paint)	Manufacturer: Sherwin Williams Color: Killim Beige Color Code: 204-C1; SW 6106	Field	Approved on
PLAM-2	Manufacturer: Formica Color: Jamocho Granite Finish: Matte	Countertops	Comparable Products by Prior Approval	<b>09 68 50 CARPETING</b>				PNT-2	Manufacturer: Sherwin Williams Color: Tony Taupe Color Code: 249-C3; SW 7638	Frames	Approved on
<b>06 61 00 CAST POLYMER FABRICATIONS</b>				CPT-1 (Carpet Tile)	Manufacturer: Interface Style Name: Verticals Color Name: Altitude 103743 Construction: Tufted Textured Loop Size: 25CM X 1M Backing: GlasBac Tile Installation:	Office Rooms & Foundation offices	Comparable Products by Prior Approval	PNT-3	Manufacturer: Sherwin Williams Color: Mediterranean Color Code: 281-C6; SW7617	Accent	Approved on
SS-1 (Solid Surface)	Manufacturer: Avonite Color: Sirocco	Transaction top Room 111	Verify Color Match with desk in Room 130	<b>12 24 00 WINDOW SHADES</b>				WS-1	Type: Manual Shade Manufacturer: SWF Contract Product: Infinity 2 Fabric: ShearWeave 3% Open Fabric Color: Wheat Fascia: Yes Bead Chain: Metal Ham: Heat-Sealed Hem Pocket	See A102	Comparable Products by Prior Approval
SS-2 (Solid Surface)	Manufacturer: Corian Color: Canyon	Window Sills	Comparable Products by Prior Approval								



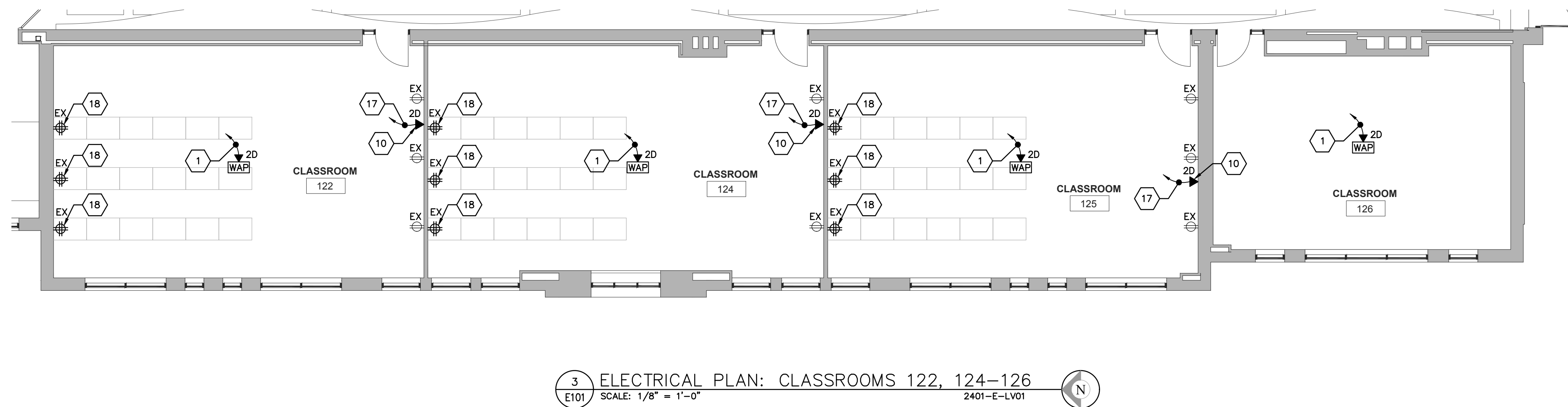
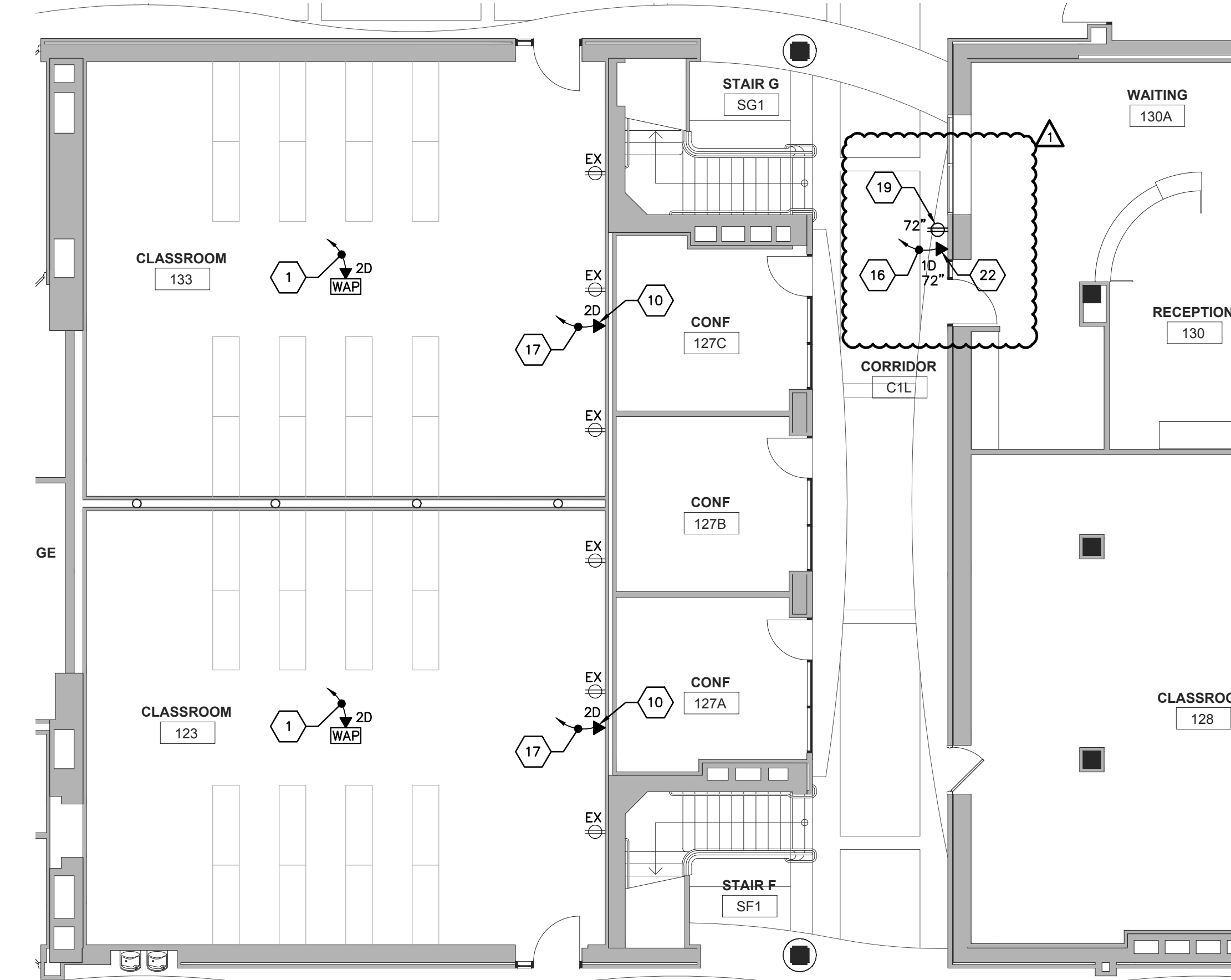
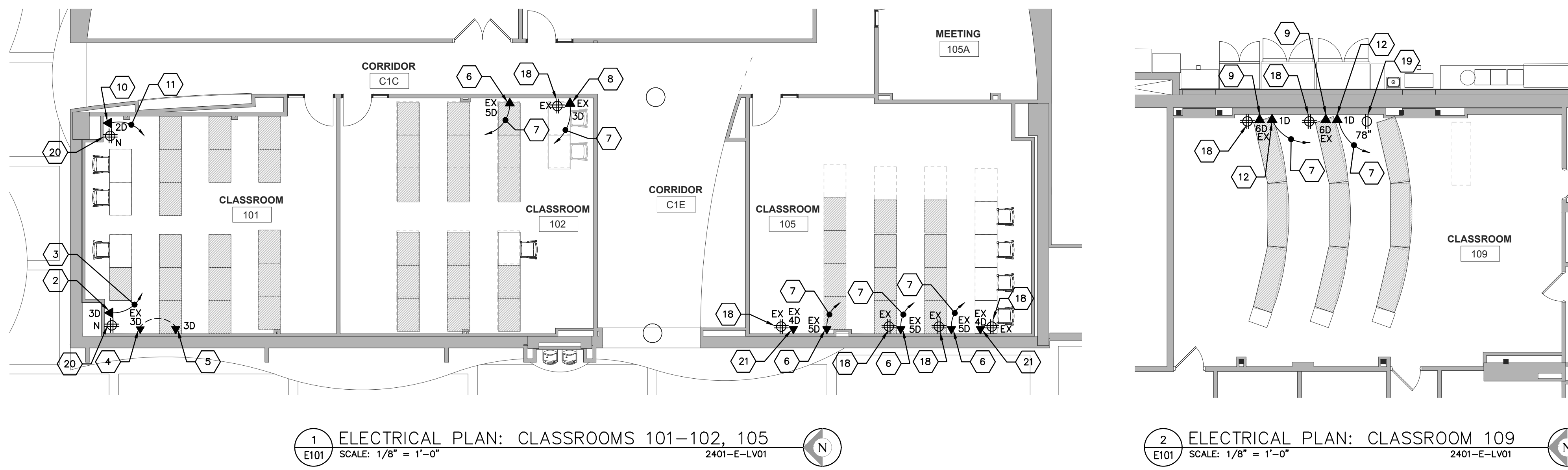
Consultant:



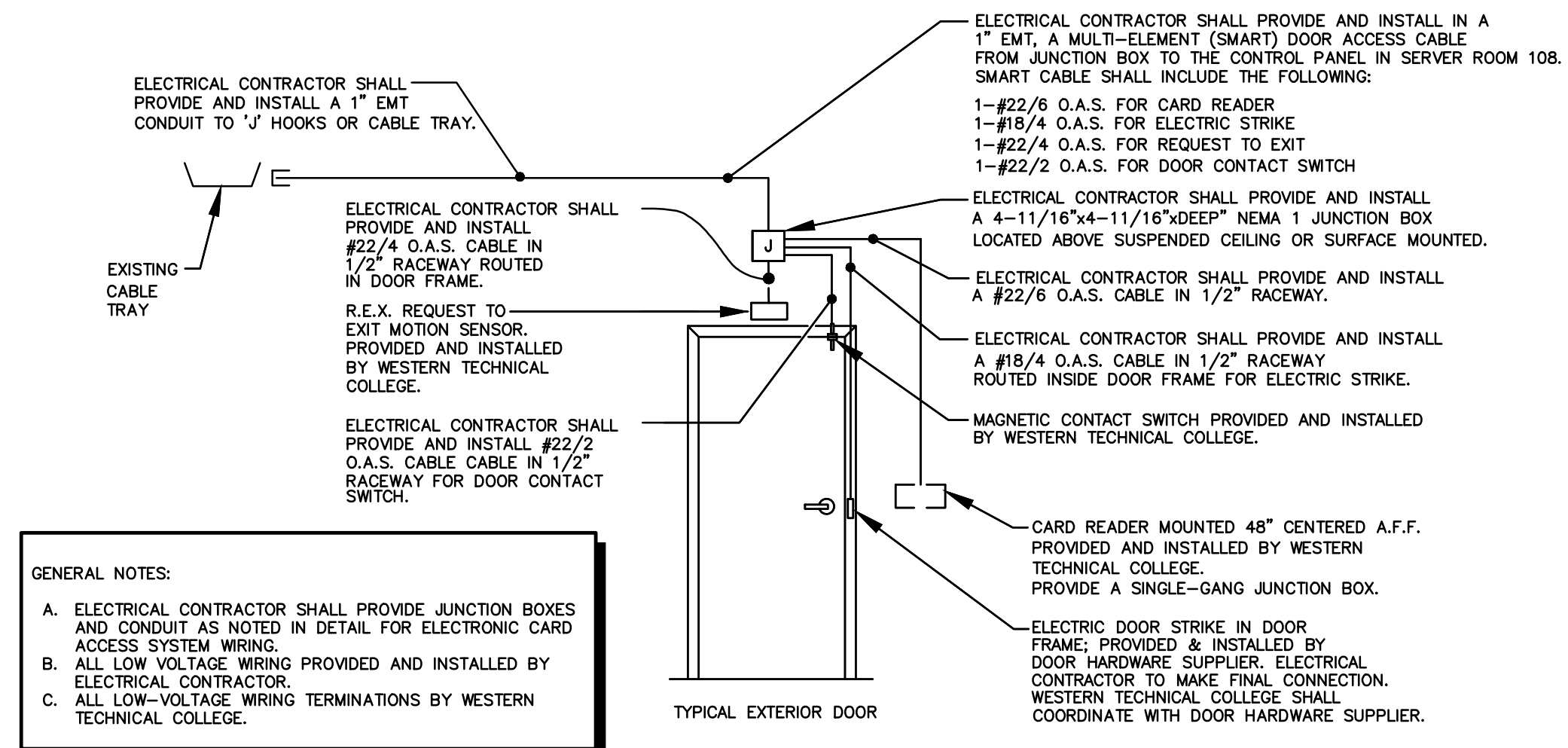
WESTERN TECHNICAL COLLEGE  
COLEMAN CENTER 2024 RENOVATION

368 6TH ST NORTH  
LA CROSSE, WI

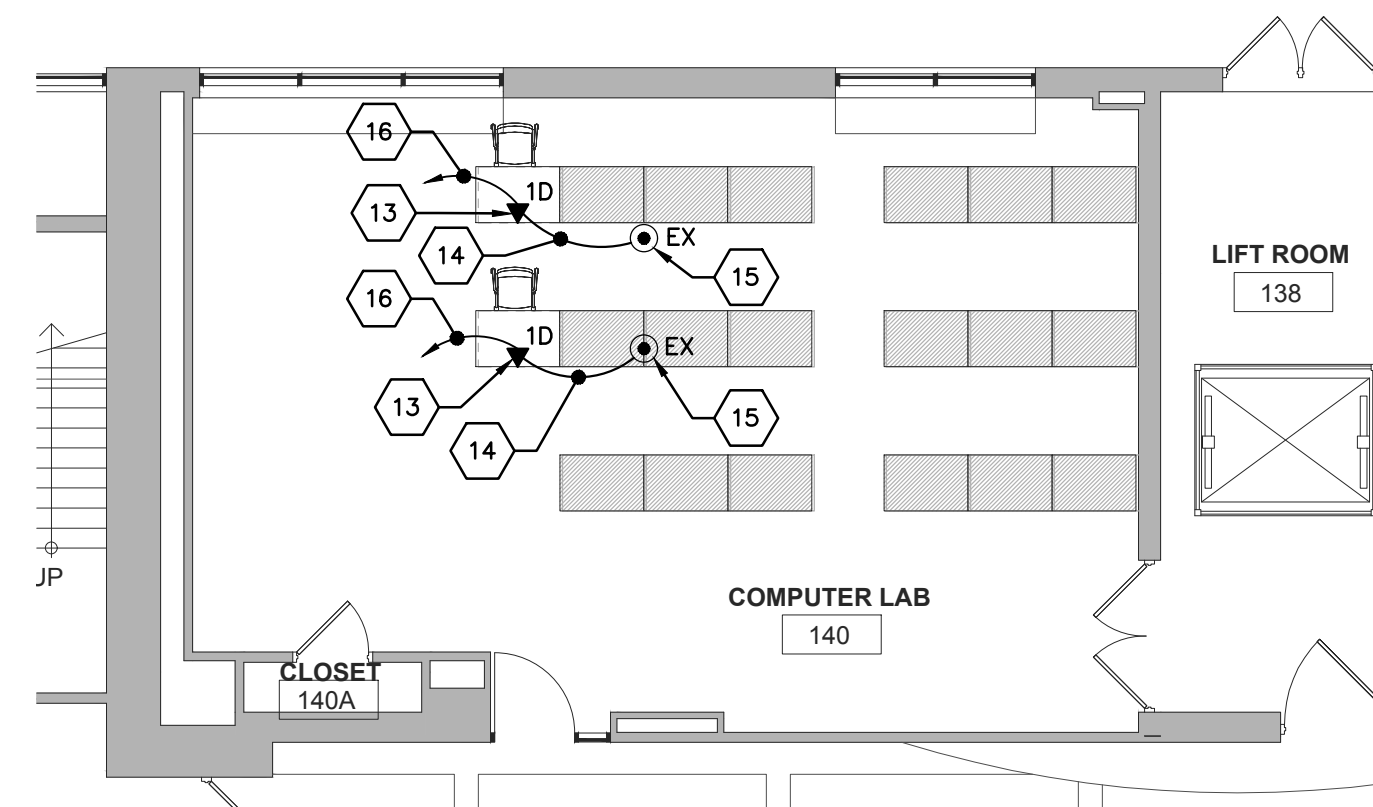
CLASSROOMS ELECTRICAL PLANS



- ELECTRICAL REMODEL PLAN NOTES - E101.
- APPROXIMATE LOCATION OF WIRELESS ACCESS POINT (WAP) PROVIDED BY WTC 'IT' DEPARTMENT INSTALLED BY ELECTRICAL CONTRACTOR. PROVIDE A SINGLE GANG JUNCTION BOX INSTALLED FLUSH IN ACOUSTIC CEILING TILE. PROVIDE TWO (2) CAT6A CABLES BETWEEN WAP AND EXISTING ELECTRICAL/HUB ROOM 135A. TERMINATE BOTH ENDS OF CABLE.
  - PROVIDE ONE NEW 3-PORT DATA JACK AT THIS LOCATION. IT WILL BE REQUIRED TO 'FISH' CAT6 CABLES AND INSTALL JUNCTION BOXES IN EXISTING WALL. FIELD VERIFY SCOPE OF WORK PRIOR TO SUBMITTING BID.
  - PROVIDE THREE (3) CAT6 CABLES APPROVED BY WTC 'IT' DEPARTMENT TO SERVER ROOM #108 AND TERMINATE BOTH ENDS OF CABLE.
  - RELOCATE EXISTING 3-PORT DATA JACK TO THE SOUTH APPROXIMATELY 4'-0". IT WILL BE REQUIRED TO 'FISH' EXISTING CAT 6 CABLES IN EXISTING WALL. FIELD VERIFY SCOPE OF WORK PRIOR TO SUBMITTING BID.
  - REINSTALL EXISTING 3-PORT DATA JACKS IN THIS APPROXIMATE LOCATION. REUSE EXISTING CAT6 CABLE AND DATA JACKS TO THE EXTENT POSSIBLE. RELABEL AS REQUIRED BY WTC 'IT' DEPARTMENT. IT WILL BE REQUIRED TO 'FISH' EXISTING CAT6 CABLE IN EXISTING WALL. FIELD VERIFY SCOPE OF WORK PRIOR TO SUBMITTING BID.
  - PROVIDE ONE (1) ADDITIONAL DATA JACK AT THIS LOCATION. PLEASE NOTE THERE IS AN EXISTING 4-PORT DATA JACK AND JUNCTION BOX WITH CONDUIT STUBBED TO ABOVE CEILING AT THIS LOCATION. FIELD VERIFY SCOPE OF WORK PRIOR TO SUBMITTING BID.
  - PROVIDE ONE (1) CAT6 CABLE APPROVED BY WTC 'IT' DEPARTMENT TO SERVER ROOM #108 AND TERMINATE BOTH ENDS OF CABLE.
  - PROVIDE ONE (1) ADDITIONAL DATA JACK AT THIS LOCATION. PLEASE NOTE THERE IS AN EXISTING 2-PORT DATA JACK AND JUNCTION BOX WITH CONDUIT STUBBED TO ABOVE CEILING AT THIS LOCATION. FIELD VERIFY SCOPE OF WORK PRIOR TO SUBMITTING BID.
  - EXISTING 6-PORT DATA JACK TO REMAIN AS IS.
  - PROVIDE ONE NEW 2-PORT DATA JACK AT THIS LOCATION. IT WILL BE REQUIRED TO 'FISH' CAT6 CABLES AND INSTALL JUNCTION BOXES IN EXISTING WALL. FIELD VERIFY SCOPE OF WORK PRIOR TO SUBMITTING BID.
  - PROVIDE TWO (2) CAT6 CABLES APPROVED BY WTC 'IT' DEPARTMENT TO SERVER ROOM #108 AND TERMINATE BOTH ENDS OF CABLES.
  - PROVIDE ONE NEW 1-PORT DATA JACK AT THIS WORK STATION LOCATION. REFER TO PHOTOS #3 & #4 ON SHEET E102 FOR EXAMPLE OF INSTALLATION. FIELD VERIFY SCOPE OF WORK PRIOR TO SUBMITTING BID. COORDINATE THOROUGHLY WITH WTC 'IT' DEPARTMENT PRIOR TO SUBMITTING BID.
  - ROUTE NEW CAT6 CABLE BETWEEN EXISTING FLOOR BOX AND NEW WORK STATION AS DIRECTED BY WTC 'IT' DEPARTMENT. REFER TO PHOTOS #3 & #4 ON SHEET E102 FOR EXAMPLE OF INSTALLATION.
  - IT WILL BE REQUIRED TO ROUTE NEW CAT6 CABLE BETWEEN NEW WORK STATION AND ELECTRICAL/HUB ROOM #135A THROUGH THIS EXISTING FLOOR BOX. FIELD VERIFY SCOPE OF WORK PRIOR TO SUBMITTING BID. REFER TO PHOTO #4 ON SHEET E102 FOR FLOOR BOX.
  - PROVIDE ONE (1) CAT6 CABLE APPROVED BY WTC 'IT' DEPARTMENT TO ELECTRICAL/HUB ROOM #135A AND TERMINATE BOTH ENDS OF CABLE.
  - PROVIDE TWO (2) CAT6 CABLES APPROVED BY WTC 'IT' DEPARTMENT TO ELECTRICAL/HUB ROOM #135A AND TERMINATE BOTH ENDS OF CABLES.
  - PROVIDE ONE ADDITIONAL DUPLEX RECEPTACLE AT THIS LOCATION. PLEASE NOTE THERE IS ONE EXISTING DUPLEX RECEPTACLE INSTALLED. CHANGE TO A DOUBLE DUPLEX RECEPTACLE. REUSE EXISTING BRANCH-CIRCUIT WIRING, JUNCTION BOX AND RECEPTACLE, ETC. TO THE EXTENT POSSIBLE. PROVIDE ADDITIONAL 20 AMP., 120VAC DUPLEX RECEPTACLE TO MATCH EXISTING AND PROVIDE A DOUBLE DUPLEX RECEPTACLE COVER PLATE.
  - PROVIDE A DUPLEX RECEPTACLE AT THIS APPROXIMATE LOCATION. COORDINATE EXACT LOCATION WITH WTC 'IT' DEPARTMENT. IT WILL BE REQUIRED TO 'FISH' POWER WIRING INTO EXISTING WALL. FIELD VERIFY SCOPE OF WORK PRIOR TO SUBMITTING BID. CONNECT TO NEAREST AVAILABLE EXISTING 120VAC BRANCH-CIRCUIT WIRING IN THIS ROOM.
  - PROVIDE TWO (2) CAT6 CABLES APPROVED BY WTC 'IT' DEPARTMENT TO ELECTRICAL/HUB ROOM #135A AND TERMINATE BOTH ENDS OF CABLES.
  - PROVIDE A DOUBLE DUPLEX RECEPTACLE AT THIS APPROXIMATE LOCATION. COORDINATE EXACT LOCATION WITH WTC 'IT' DEPARTMENT. IT WILL BE REQUIRED TO 'FISH' POWER WIRING INTO EXISTING WALL. FIELD VERIFY SCOPE OF WORK PRIOR TO SUBMITTING BID. CONNECT TO NEAREST AVAILABLE EXISTING 120VAC BRANCH-CIRCUIT WIRING IN THIS ROOM.
  - EXISTING 4-PORT DATA JACK TO REMAIN AS IS.
  - PROVIDE ONE NEW 1-PORT DATA JACK AT THIS LOCATION FOR INFORMATION MONITOR. IT WILL BE REQUIRED TO 'FISH' CAT6 CABLE AND INSTALL CUT-IN JUNCTION BOX IN EXISTING WALL. LOCATE ADJACENT TO NEW DUPLEX RECEPTACLE. FIELD VERIFY SCOPE OF WORK PRIOR TO SUBMITTING BID.



6 ELECTRONIC DOOR ACCESS CONTROL DIAGRAM  
E101 SCALE: 1/8" = 1'-0" 2401-E-DOOR READ DTL



5 ELECTRICAL PLAN: COMPUTER LAB 140  
E101 SCALE: 1/8" = 1'-0" 2401-E-LV01

CONSTRUCTION DOCUMENTS

No.	Description	Date
1	ADDENDUM 1	3/14/2024

Graphic Scale: VARIES

Last Update: 3/13/2024

E101